

15 PACELLA PARK DRIVE

RANDOLPH, MASSACHUSETTS

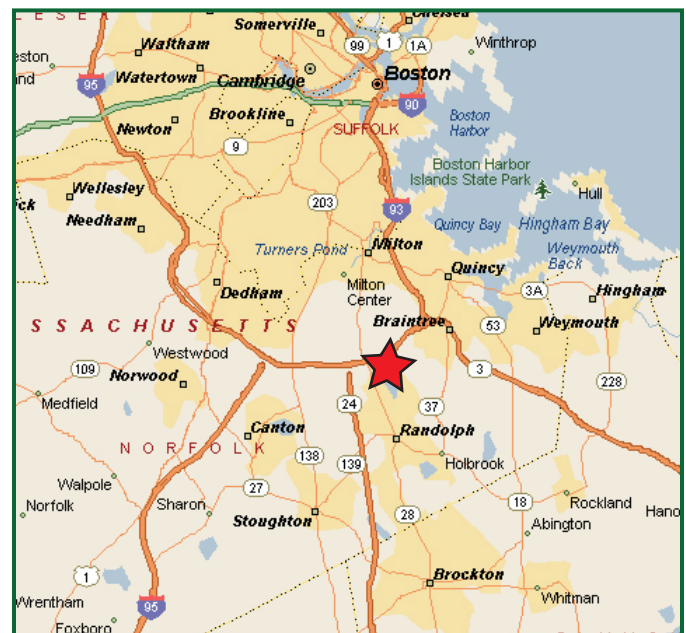


5,085 SF OFFICE SPACE AVAILABLE FOR LEASE

Lincoln Property Company is pleased to present 5,085 SF of first class office space for lease at 15 Pacella Park Drive.

15 Pacella Park Drive offers an attractive lobby, professional management, a suburban campus setting, and the convenience of being just 15 miles from downtown Boston. It is located just off of I-93 and Rte-28 (exit 5), and I-93 and Rte-24 (exit 4).

Area amenities include easy access to the South Shore Plaza and Five Corners, as well as MBTA commuter rail.



15 PACELLA PARK DRIVE

RANDOLPH, MASSACHUSETTS

BUILDING SPECIFICATIONS

RBA: 55,035 SF

Space Available: 5,085 SF on the 2nd Floor

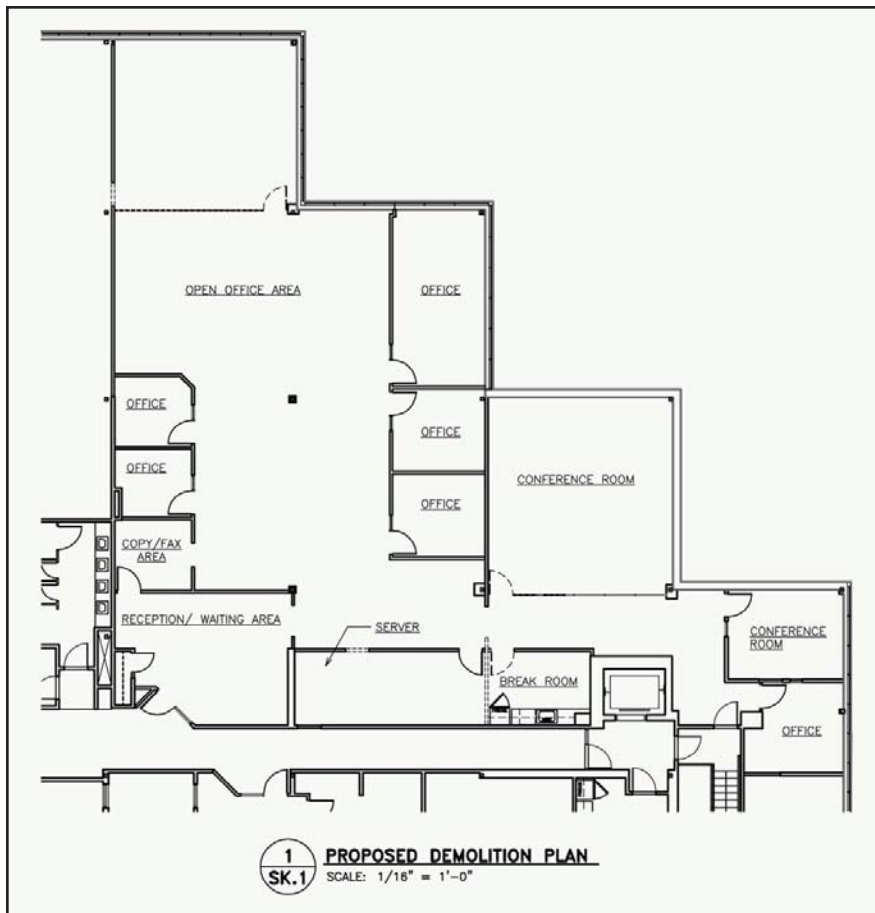
Land Area: 4.5 acres

Building Type: Two (2) story, first class office building

Construction: Steel frame with red brick and glass interior

Year Built: 1986, renovated 2007

Parking: 4 / 1,000 SF



For more information,
or to arrange a tour,
please contact:

ELLISON C. PATTEN
617-951-4136
epatten@lpc.com

NED HALLORAN
617-951-4109
nhalloran@lpc.com